



3D LASER SCANNING SERVICES

Morrison-Maierle's Survey Market Group is now offering **3D Laser Scanning**. Our goal is to provide our clients with an efficient and effective way to view and identify potential design and construction issues before they are encountered in the field. 3D Laser Scanning is a versatile solution can be used in many applications such as:

SURVEYING

Detailed 3D mapping in hard-to-reach or hazardous areas such as busy traffic intersections, bridges, transmission lines, substations, and cellular communication sites.

BUILDING INFORMATION MODELING (BIM)

Provide point clouds for digital high definition 3D models to support the design of buildings and their components from concept to design, construction, and as-built.

INDUSTRIAL FACILITIES

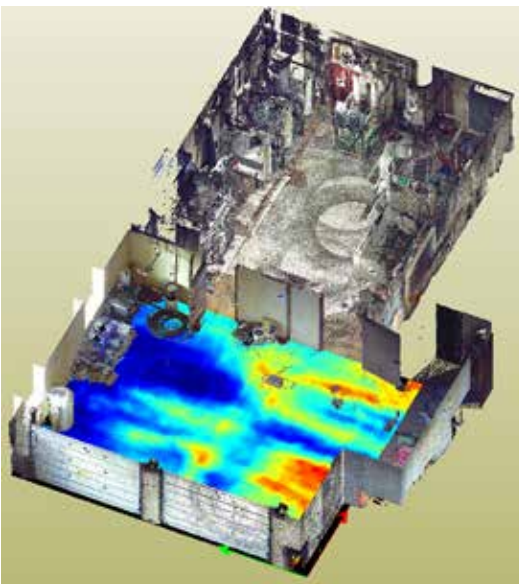
Capture highly accurate measurements and create 3D models when there is no existing CAD data available. Perform detailed inspections and comparisons to existing models, surfaces and point clouds.

ACCIDENT RECONSTRUCTION

Provide highly detailed 3D models used to analyze accident scenes by reconstruction experts.

HISTORIC PRESERVATION

3D models and imagery to support documentation of historic sites for preservation, renovations, and repairs.



MORRISON-MAIERLE'S LASER SCANNER, TOP LEFT, CAN CAPTURE HIGHLY ACCURATE MEASUREMENTS AND CREATE 3D POINT CLOUDS FOR DIGITAL, HIGH-DEFINITION, MODELS (TOP RIGHT). PICTURED ABOVE IS A 3D POINT CLOUD RENDERING WITH ELEVATION BANDING TO SHOW FLOOR FLATNESS AND LEVEL.