

Staying Compliant with Stormwater Discharging Permitting



Stormwater Construction General Permit Coverage

- Stormwater discharge to surface waters can occur

AND

- Construction activity disturbs total area equal or greater than one acre



Storm Water Pollution Prevention Plan (SWPPP)

- Site Characteristics
- Potential Pollutants
- Best Management Practices (BMPs)
- Final Stabilization
- Inspection and maintenance Procedures

SWPPP Preparer

- Prepares Permit Application
- Plans and Develops SWPPP
- Must Obtain Valid Certification

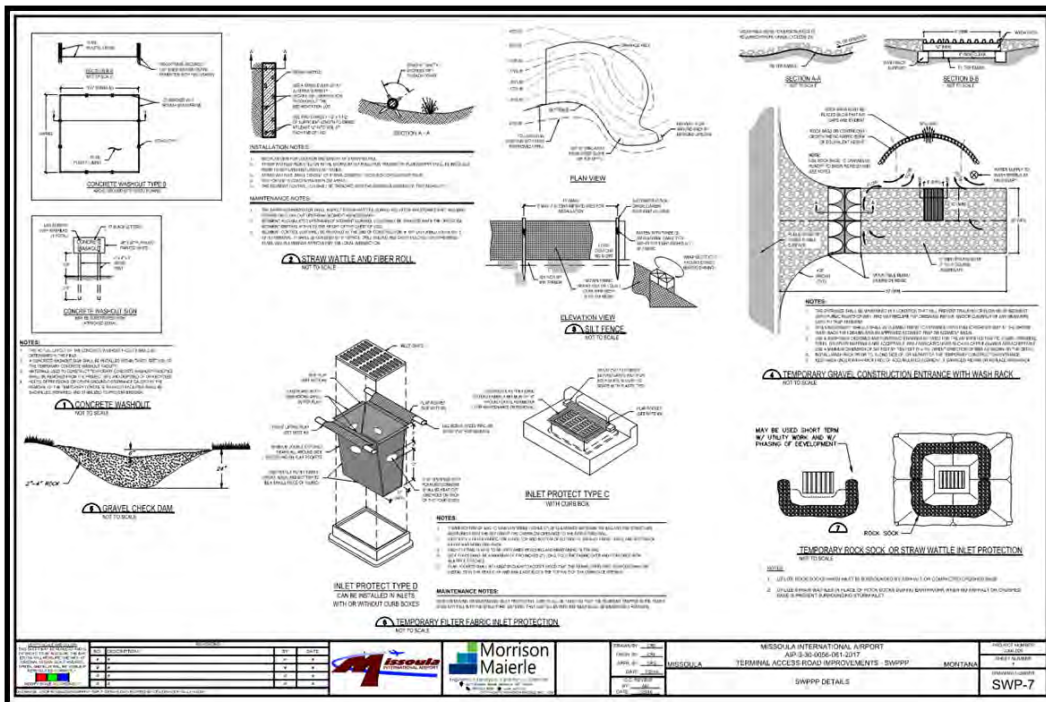
Section D SWPPP Preparer and SWPPP Administrator	
SWPPP Preparer:	
Name or Position Title	_____
Mailing Address	_____
City, State, and Zip Code	_____
Phone Number	_____ Email _____
Training Course	_____ Date Completed _____

Best Management Practices (BMPs)

"The schedule of activities, prohibition of practices, maintenance procedures, and other management practices to prevent or reduce the pollution of state surface waters."



Best Management Practices (BMPs)



The drawing illustrates several BMPs with detailed diagrams and notes:

- CONCRETE WASHOUT:** Includes plan and elevation views with notes on installation and maintenance.
- STRAW WATTLE AND FIBER ROLL:** Shows a cross-section of the wattle structure with notes on material specifications.
- GRAVEL CHECK DAM:** Features a plan view of a gravel-filled structure with notes on its use and maintenance.
- INLET PROTECT TYPE C:** Shows a plan view of a curb and grate inlet protection with notes on its application.
- INLET PROTECT TYPE D:** Shows a plan view of a curb and grate inlet protection with notes on its application.
- TEMPORARY FILTER FABRIC INLET PROTECTION:** Shows a plan view of a fabric-based inlet protection with notes on its use.
- TEMPORARY ROCK SOCK, OR STRAW WATTLE INLET PROTECTION:** Shows a plan view of a rock sock inlet protection with notes on its use.
- TEMPORARY GRAVEL CONSTRUCTION ENTRANCE WITH WASH BAY:** Shows a plan view of a gravel entrance with a wash bay and notes on its use.

MAINTENANCE NOTES:

- Check for debris accumulation and clean out as needed.
- Check for structural damage and repair as needed.
- Check for material degradation and replace as needed.
- Check for proper installation and adjust as needed.

GENERAL NOTES:

- Use materials specified in the drawing.
- Install according to the drawing.
- Check for proper installation and adjust as needed.
- Check for material degradation and replace as needed.

PROJECT INFORMATION:

PROJECT NO.	DATE	SCALE

DESIGNER: MORRISON MAIERLE

CLIENT: MISSOULA INTERNATIONAL AIRPORT

PROJECT: AIR 3-36-0056-001 2017

LOCATION: MISSOULA, MONTANA

PROJECT NAME: TERMINAL ACCESS ROAD IMPROVEMENTS - SWPPP

SWPPP DETAILS: SWP-7

- Erosion Control
- Sediment Control
- Good Housekeeping













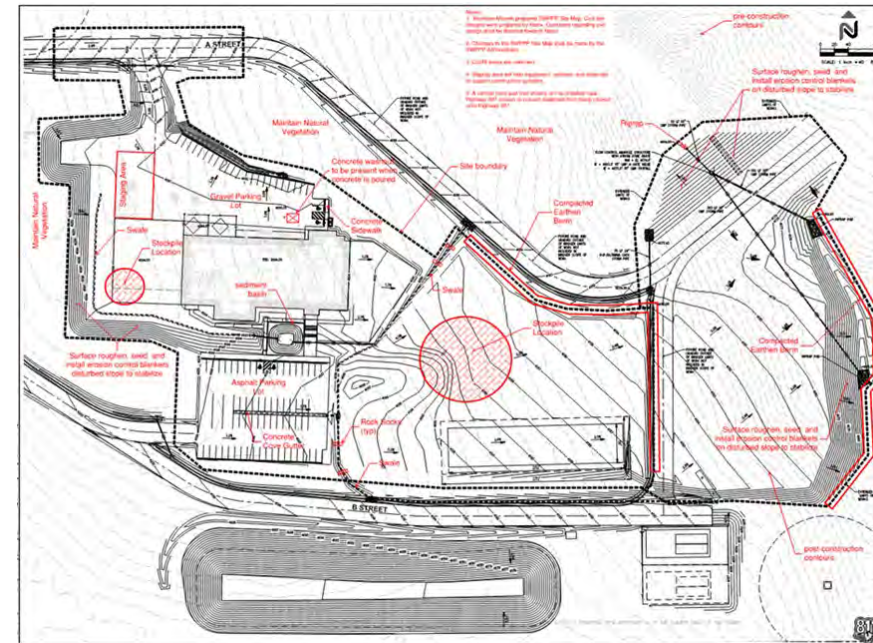






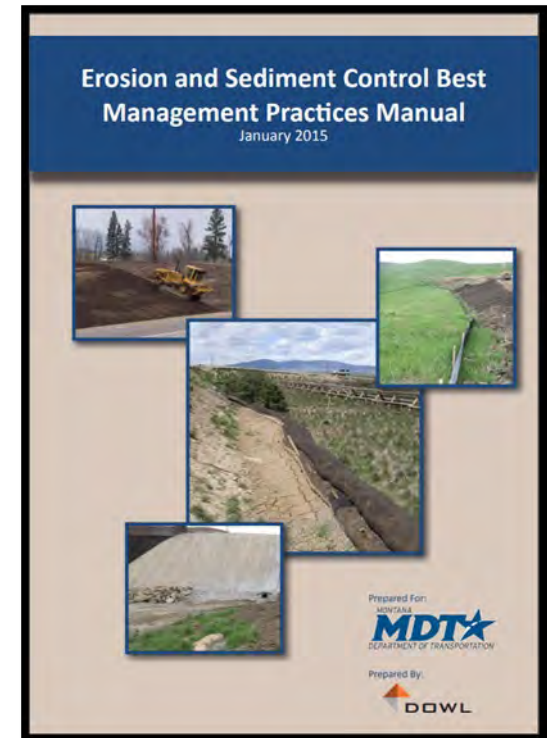
SWPPP Administrator

- Develops, Implements, Maintains, Revises, Updates SWPPP
- Authorized Representative of Owner
- Must Obtain Valid Certification



BMP Design Standards

- Effective Operating Condition
- MDT Erosion and Sediment Control Best Management Practices Manual
- MDEQ Storm Water Management During Construction Field Guide for Best Management Practices
- Urban Storm Drainage Criteria Manual
- Municipalities













Public Sign

- Effective January 1, 2021
- Large, readable font
- MPDES Authorization Number or Confirmation Letter
- “Request project information from Montana DEQ Water Protection Bureau at (406) 444-3080
- Safe and Accessible Location

Terminating Coverage

- Notice of Termination (NOT)
- Final Stabilization
- Removal of Temporary BMPs
- Removal of Equipment and Vehicles
- Completion of Pollution Generated Activities

Questions

Dominic Goble
dgoble@m-m.net

